



# Adjustment

# Overview

1	Quality.....	3
2	Information about loading the cabinets.....	4
3	Adjustment.....	5
3.1	Swivel doors.....	5
3.2	Framed glass doors with hidden hinge.....	6
3.3	Drawers/Pull-outs.....	7
3.4	Drawers/Pull-outs.....	11
3.5	Bi-fold lift-up doors.....	13
3.6	Soft-lift-up doors.....	14
3.7	Flap doors.....	15
3.8	Flap doors with hidden fitting.....	16
3.9	Pantry cabinet.....	17
3.10	Corner cabinets.....	18

## Safety instructions



Danger of being crushed or pinned



Danger of injury due to sharp edges



Do not climb on furniture - Risk of tip-over!



Danger of small parts being ingested



Manufacturer-specific assembly and adjustment instructions for special fitting groups (flap fittings, swing fittings, rotating floors, storage fittings) as well as installation instructions for devices, sinks and lighting are enclosed with the respective components and must be observed separately.

The enclosed care and maintenance instructions must be observed and handed over to the end customer after completion of the work.



Failure to observe the installation instructions or incorrect installation may result in impaired usability or damage to property or persons. Sachsenküchen does not assume any warranty for damages caused by this!

# 1 Quality



## Quality

Certificate of quality and safety tested kitchen technology

The requirements for the design and technical equipment were met through safety testing of various cabinet types of our kitchen furniture program.



## Quality management system

Our company is certified according to DIN EN ISO 9001:2015. The content of the DIN EN ISO 9001:2015 is the regulation of the customer orientation and process quality in terms of demand and satisfaction to the product and design.



## Transportation packing

With EKO-PUNKT Transportverpackungen GmbH & Co. KG, a waste disposal contract with the number TV000190 is closed. This ensures that collected packaging material is processed and all requirements of the packaging ordinance are met.



## Environmentally friendly production

As part of the ecological project for integrated environmental engineering, measures for the prevention of waste and emissions are implemented and projects for energy efficiency are realized. Sachsenküchen is a member of the Environmental Alliance of Saxony.



## Furniture made in Germany

The main performance in the aspects of construction, production and quality assurance must be demonstrably provided in Germany for the "Made in Germany" label. The requirements are regularly monitored externally at the production site.



## Climate agreement / Climate neutral manufacturer

Sachsenküchen has joined the "Climate Agreement for the Furniture Industry" and has been certified as a CO<sub>2</sub>-neutral manufacturer by the German Furniture Quality Association (DGM). By reducing our emissions and also compensating for them through the purchase of climate protection certificates, we are making an active contribution on the way to a climate-neutral industry.

## 2 Information about loading the cabinets

All cabinets have been designed and tested in accordance with the latest standards. All furnishings feature the GS safety tested mark and therefore conform to all applicable standards.

All specified maximum loads are statically defined, i.e. loads are the result of "careful and appropriate placing" of objects, not "dropping", "throwing" or similar. Proper use is a requirement.

Loads must be evenly distributed across the surface. Heavy loads at single points must be significantly reduced.

### suspension hinges (with DIN-conform mounting)

- hidden suspension max. 86 kg per hinge
- heavy-duty suspension max. 120 kg per hinge

### drawers / pull-outs (incl. dead load)

- drawer max. 40 kg
- pull-out max. 70 kg

### cabinet shelves

- shelf carcass material max. 50 kg / m<sup>2</sup>
- shelf glass max. 10 kg

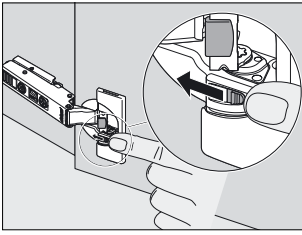
### storage fittings

- half round Lazy Susan max. 15 kg per shelf
- LeMans-swivelling shelves max. 25 kg per shelf
- 3/4-circle turning shelves max. 25 kg per shelf
- full circle turning shelves max. 25 kg per shelf
- base cabinets with trays max. 12 kg per tray
- pantry cabinet with trays max. 18 kg per tray
- Tandem max. 10 kg per tray and max. 4 kg per tray (door shelf)
- Tandem Solo max. 16 kg per tray
- Tandem Side max. 4 kg per tray
- chamfered base/pantry cabinets with trays max. 10 kg per tray

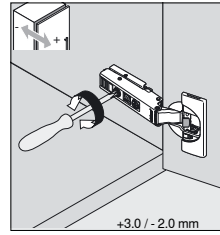
# 3 Adjustment

## 3.1 Swivel doors

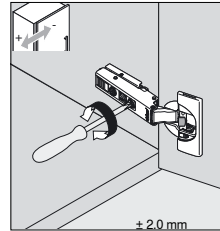
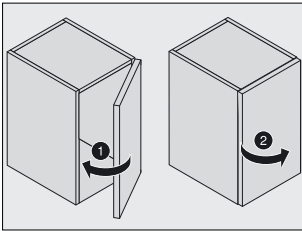
All swivel doors are hinged with quick mounting metal hinges. The hinges snap in and out of place without the use of tools.



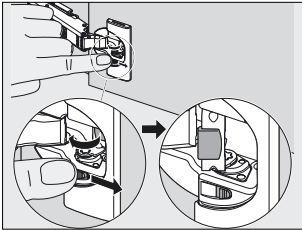
**Deactivation BLUMOTION**



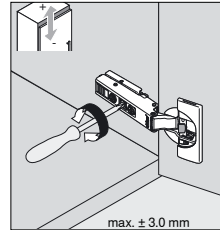
**In- and out alignment**



**Horizontal door alignment**



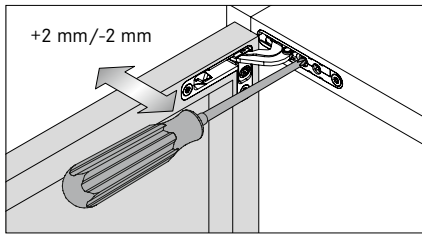
**Activation BLUMOTION**



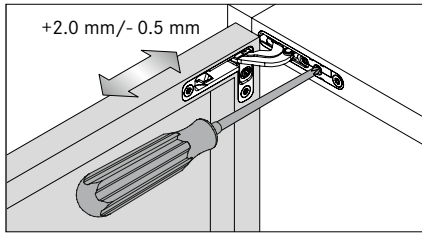
**Vertical door alignment**

### 3 Adjustment

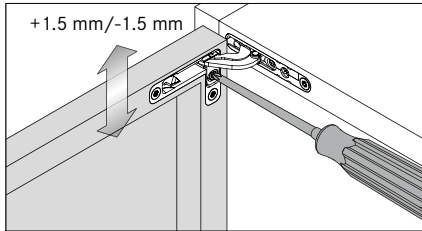
## 3.2 Framed glass doors with hidden hinge



**In- and out alignment**



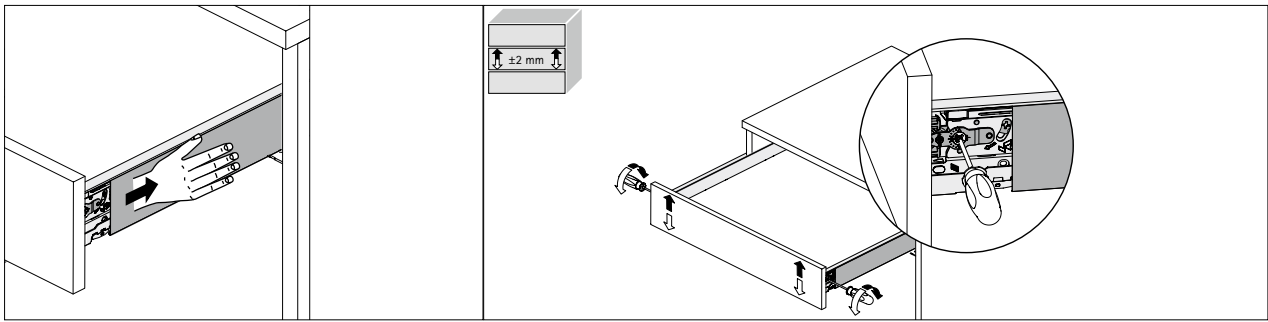
**Horizontal door alignment**



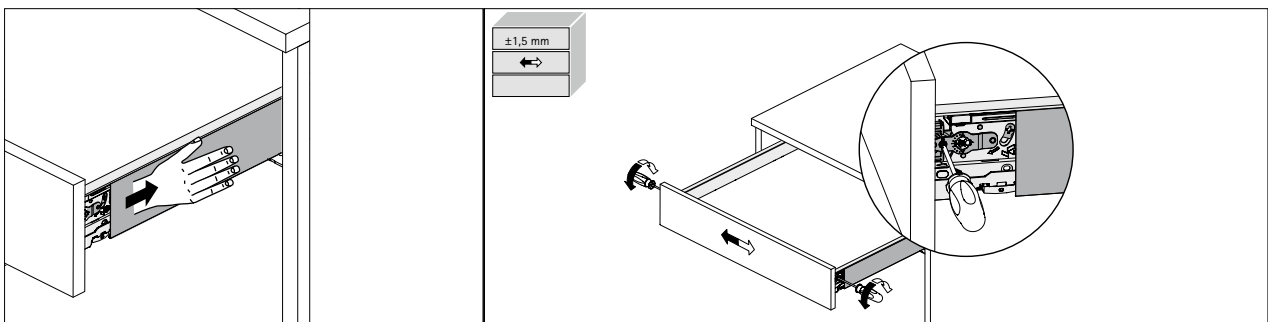
**Vertical door alignment**

### 3.3 Drawers/Pull-outs

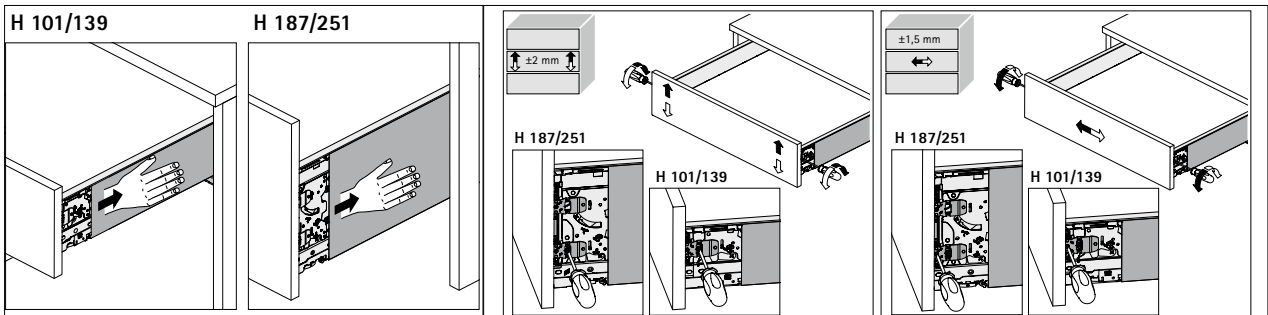
#### Height adjustment of drawers, height 77 mm



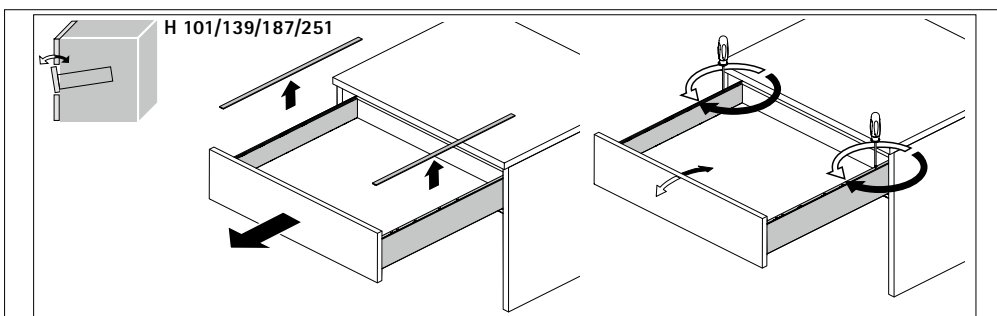
#### Lateral adjustment of drawers, height 77 mm



#### Height adjustment & lateral adjustment of drawers & pull-outs, height 101 / 187 mm



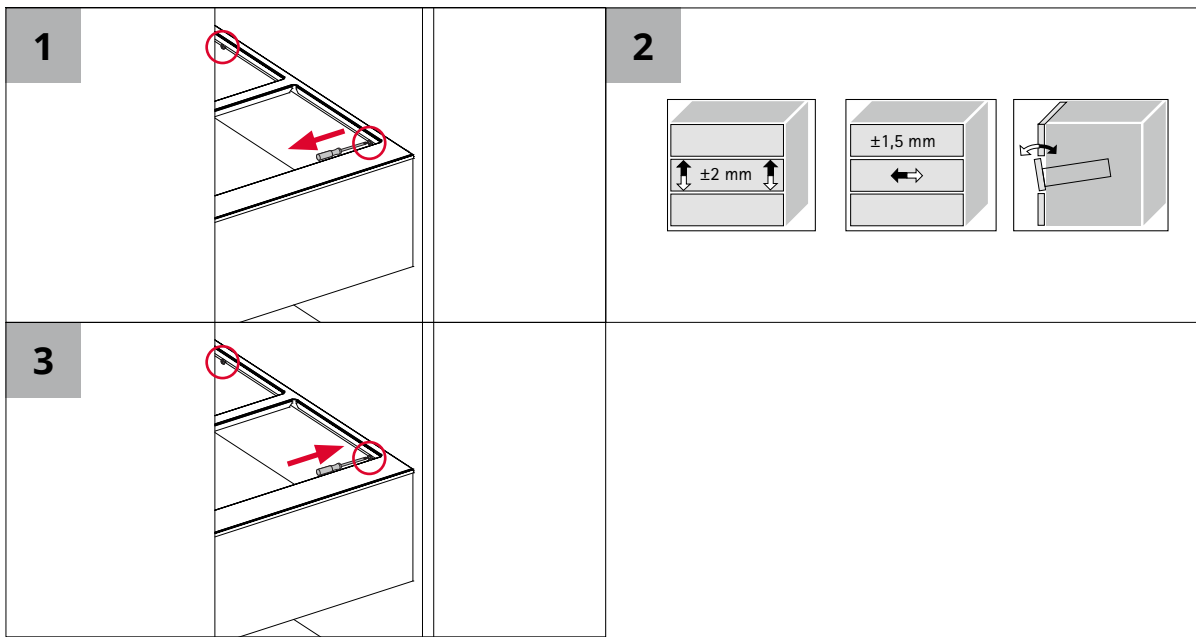
#### Inclination adjustment of drawers & pull-outs, height 101 / 187 mm



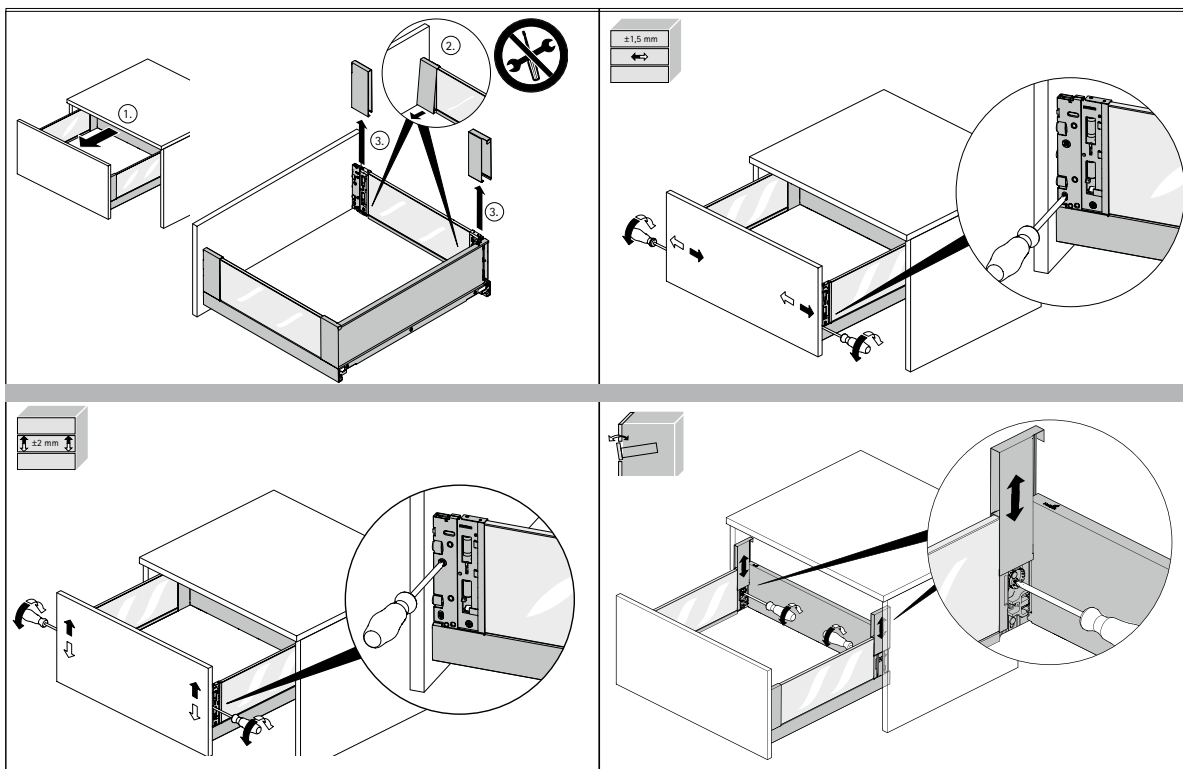
# 3 Adjustment

## 3.3 Drawers/Pull-outs

### Adjustment pull-outs with waste system

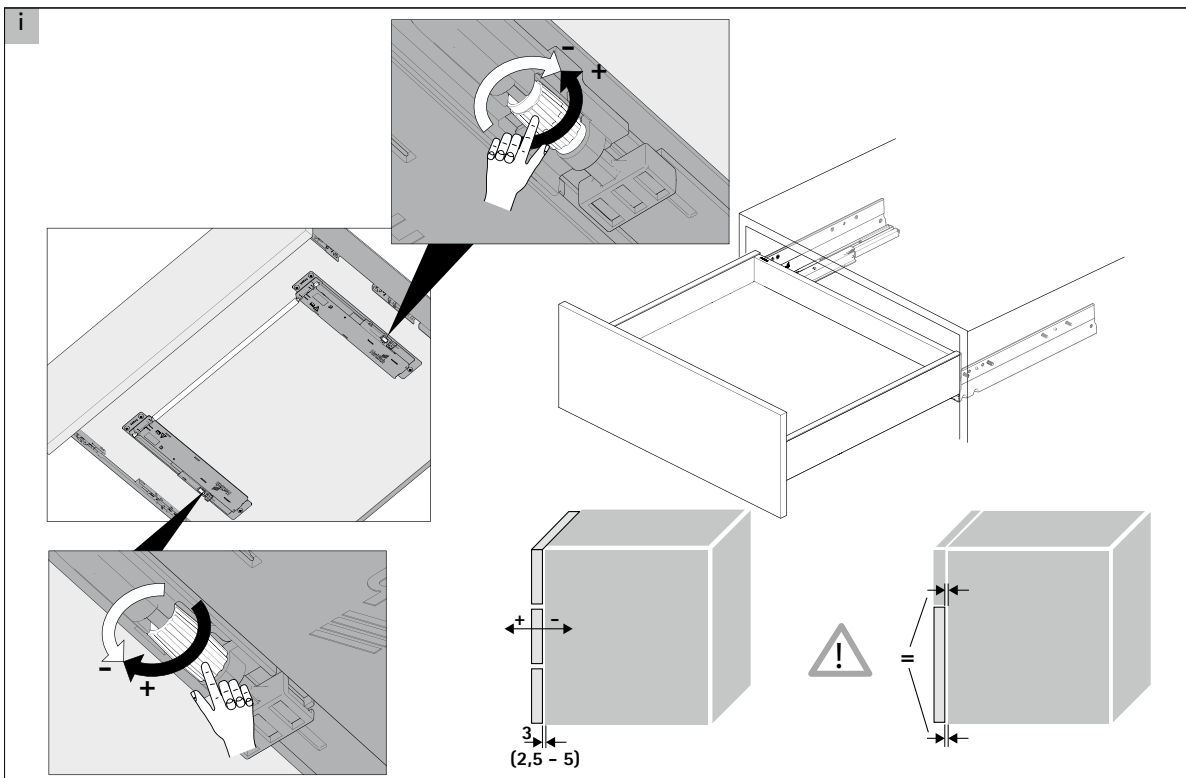


### Adjustment, pull-outs GLASS

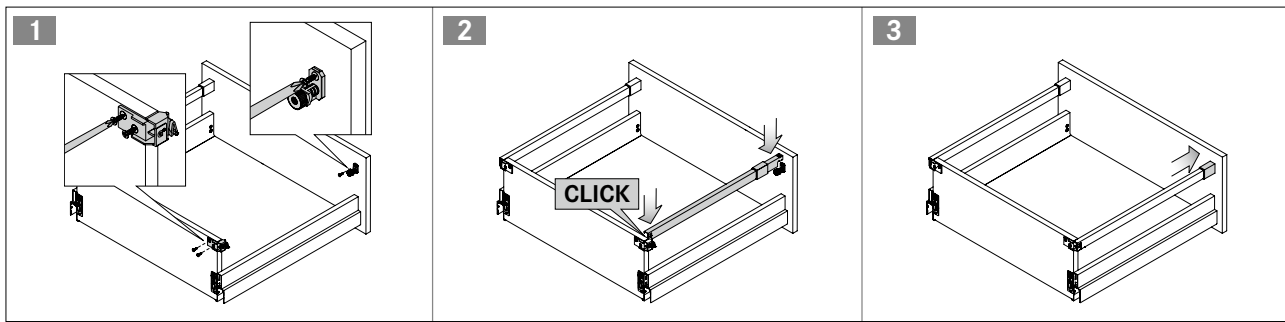


### 3.3 Drawers/Pull-outs

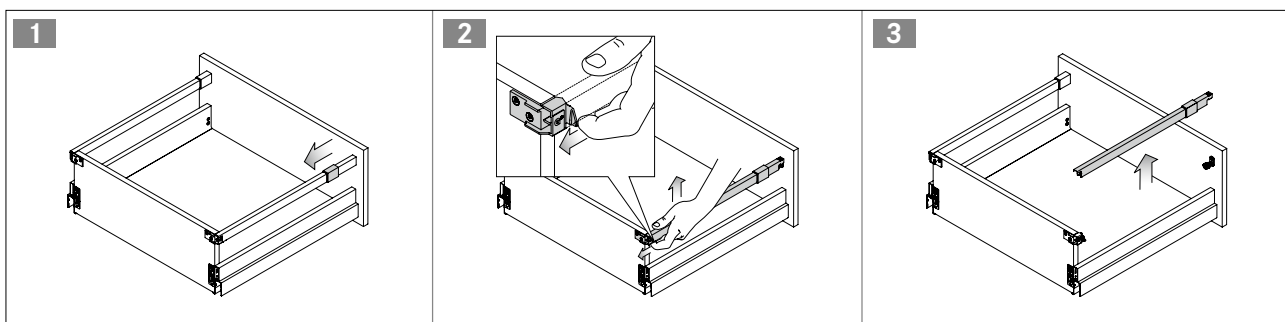
#### Push-to-open, front gap adjustment



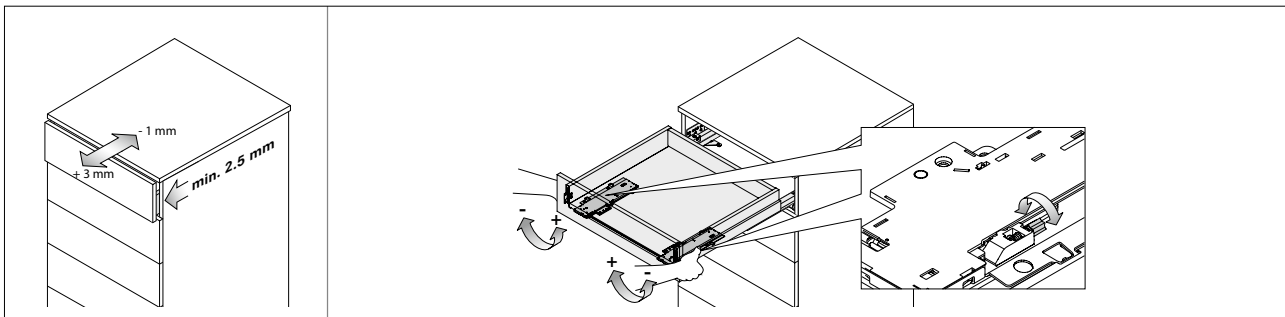
### Mounting of railing



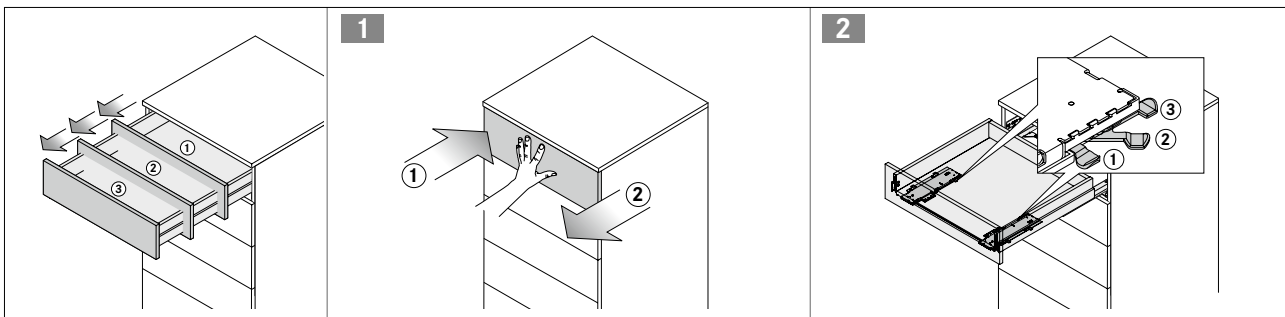
### Dismounting of railing



### Push-to-open, front gap adjustment

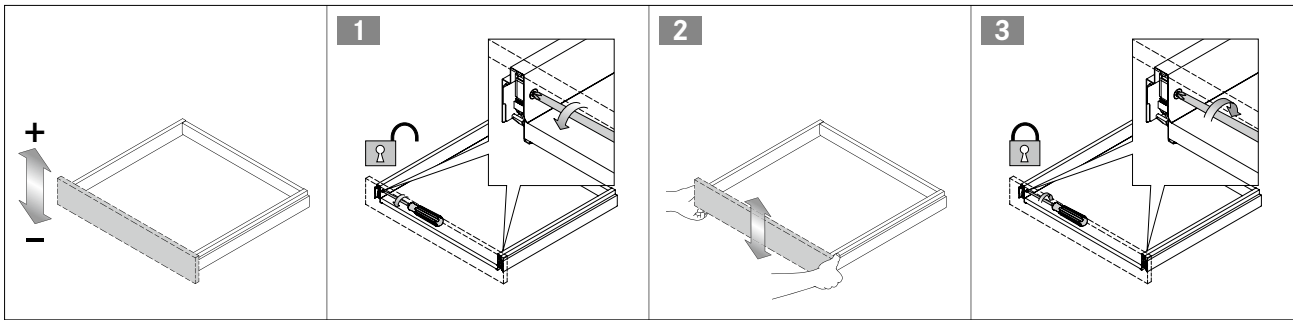


### Push-to-open, activation force

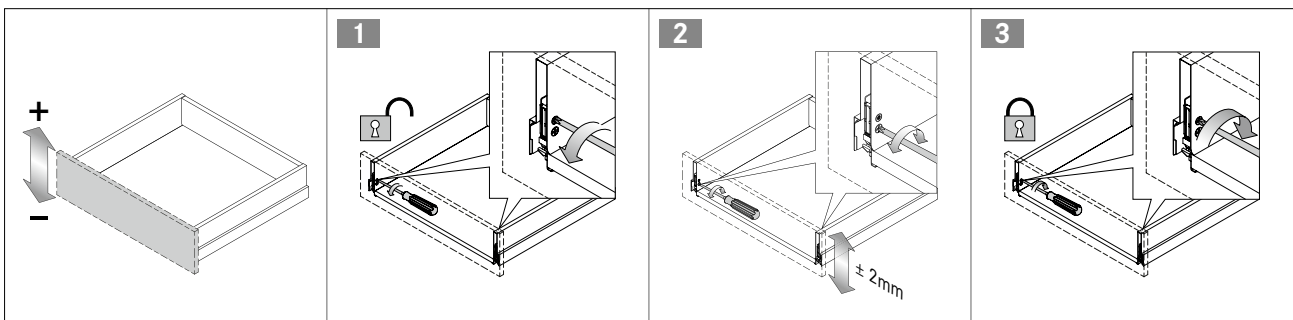


## 3.4 Drawers/Pull-outs

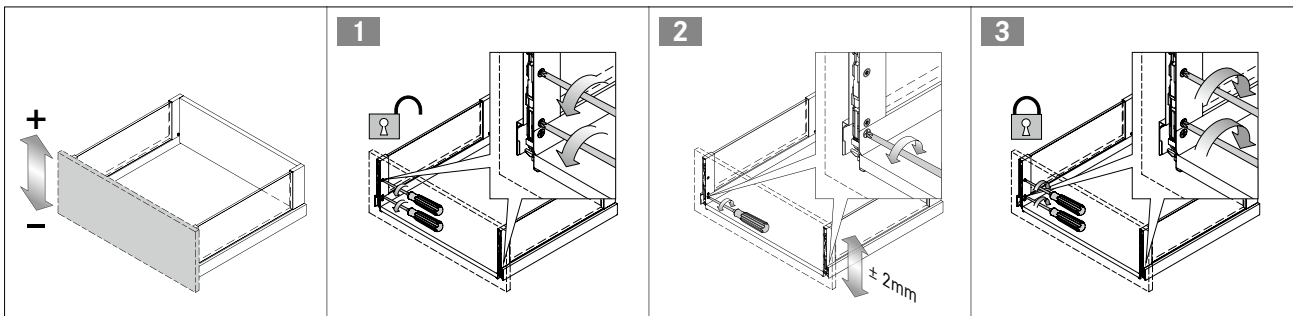
### Height adjustment of drawers, frame height 60 mm



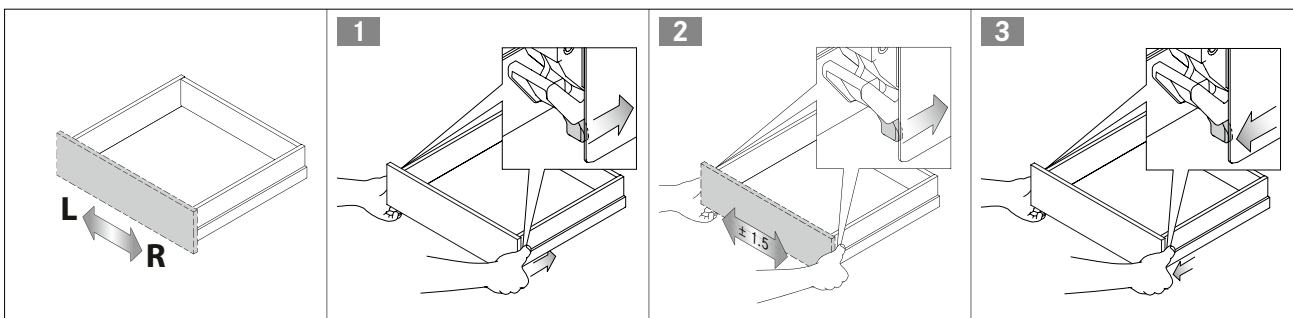
### Height adjustment of drawers, frame height 90 mm



### Height adjustment of pull-outs, frame types BOX and GLASS

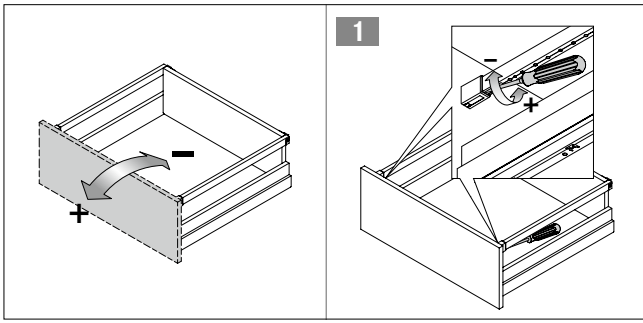


### Lateral adjustment

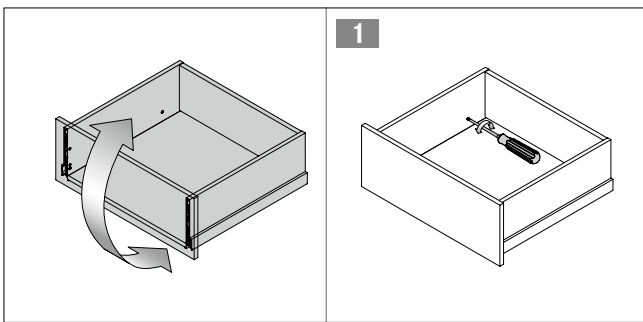


## 3.4 Drawers/Pull-outs

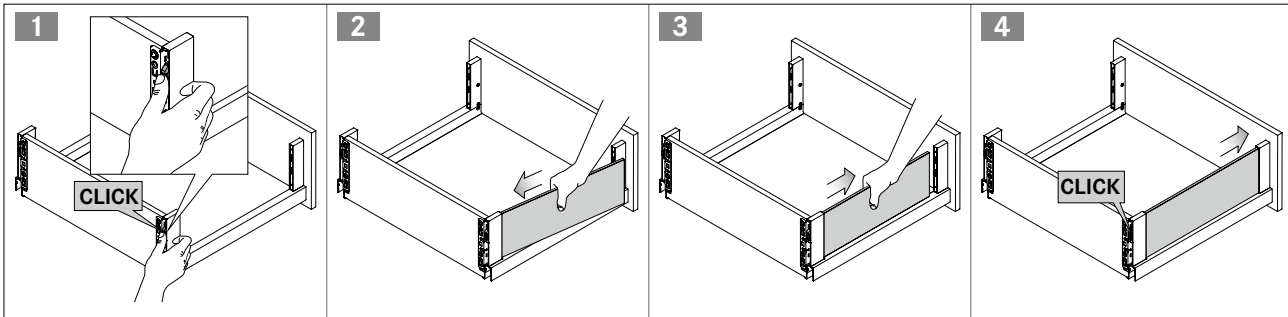
### Inclination adjustment, pull-outs with railing



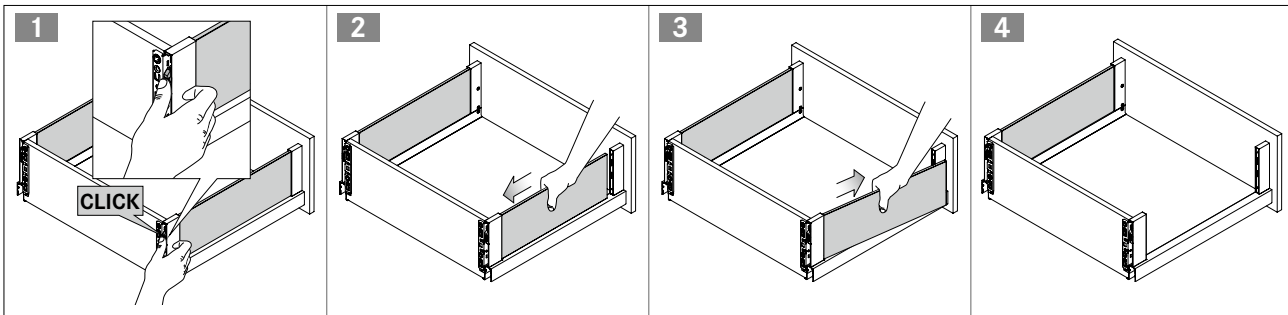
### Inclination adjustment drawers and pull-outs, frame types BOX and GLASS



### Mounting of glass sides



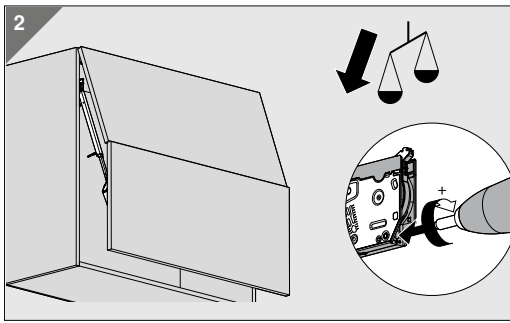
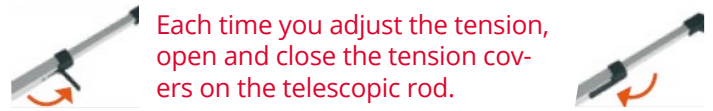
### Dismounting of glass sides



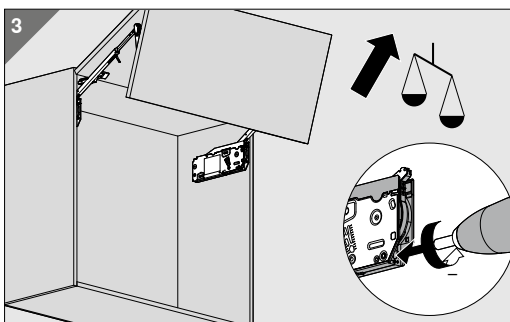
# 3 Adjustment

## 3.5 Bi-fold lift-up doors

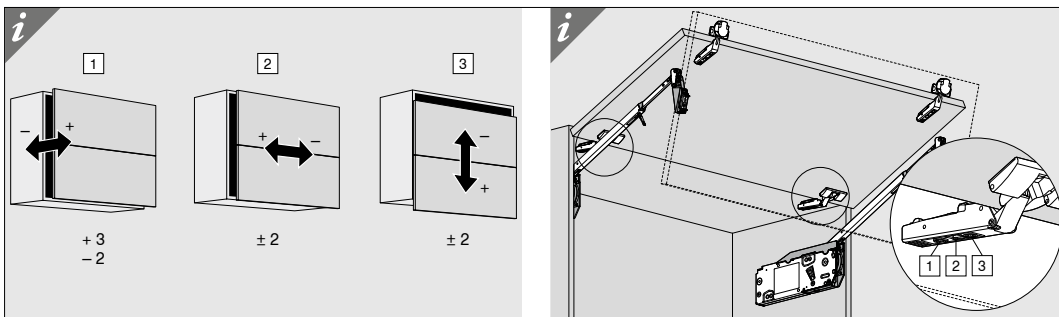
If the front drops after it was released



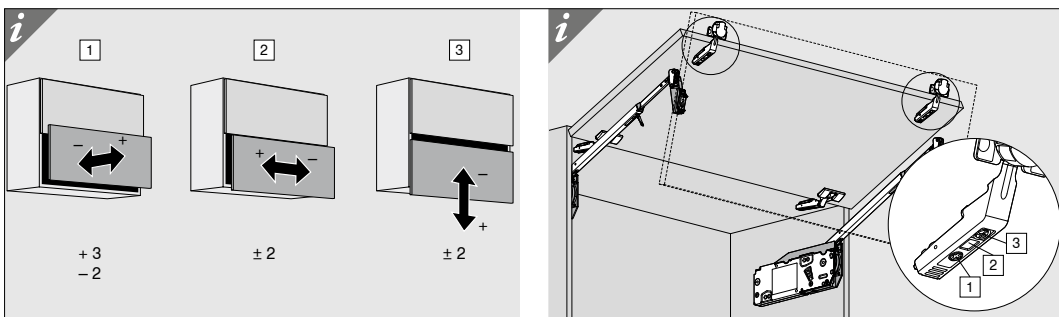
If the front rises after it was released



Lateral, height and depth adjustment of both fronts



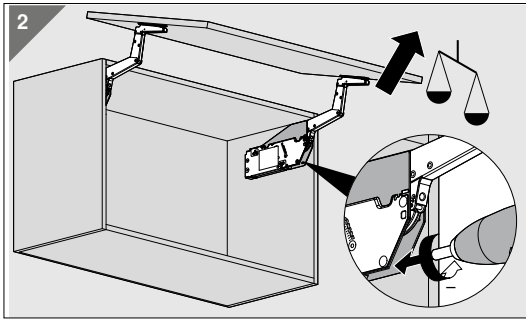
Lateral, height and depth adjustment of lower front



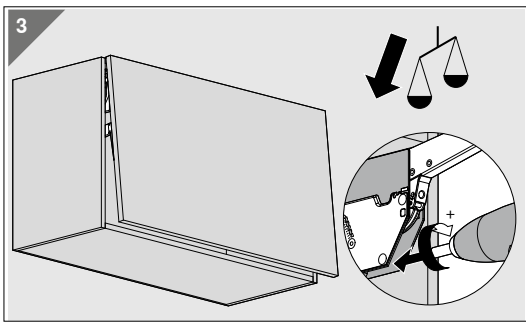
### 3 Adjustment

## 3.6 Soft-lift-up doors

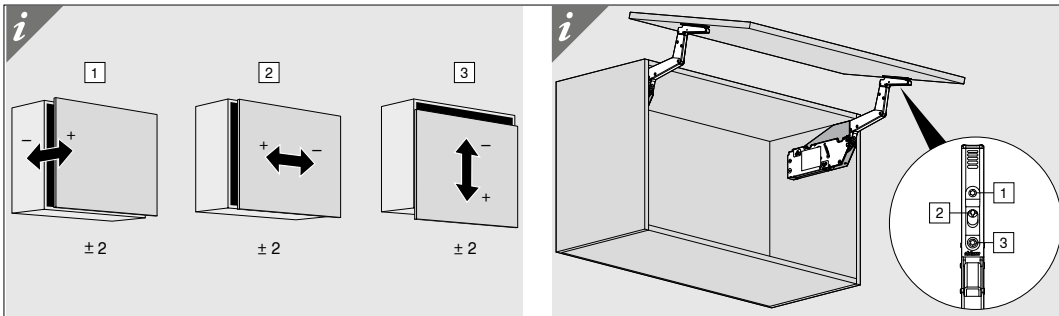
If the front drops after is was released



If the front rises after is was released



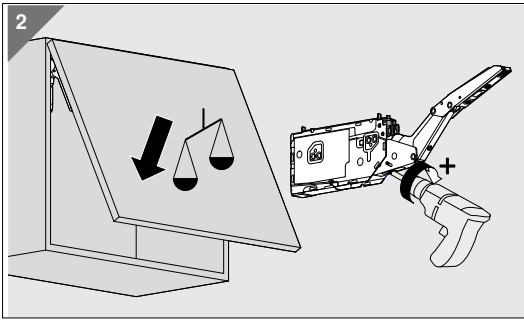
Lateral, height and depth adjustment



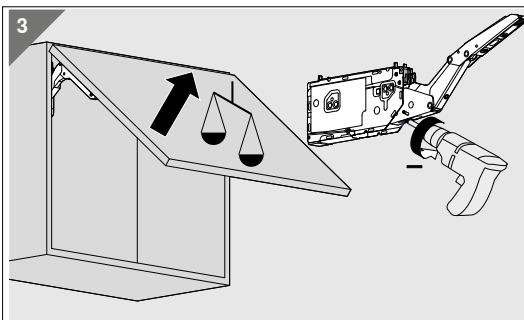
### 3 Adjustment

## 3.7 Flap doors

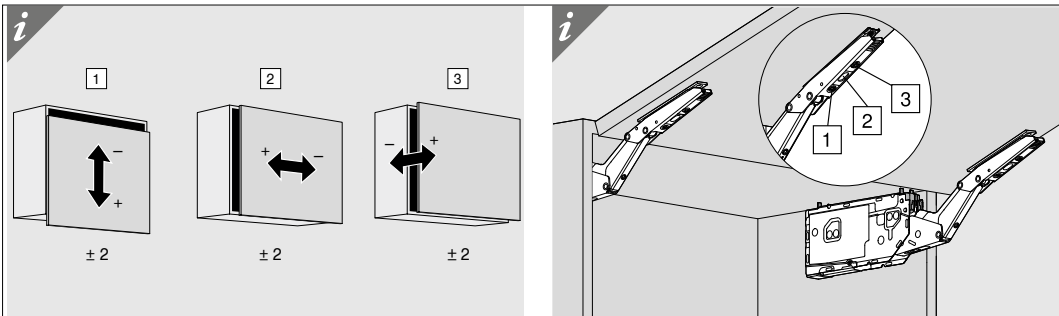
If the front drops after is was released



If the front rises after is was released



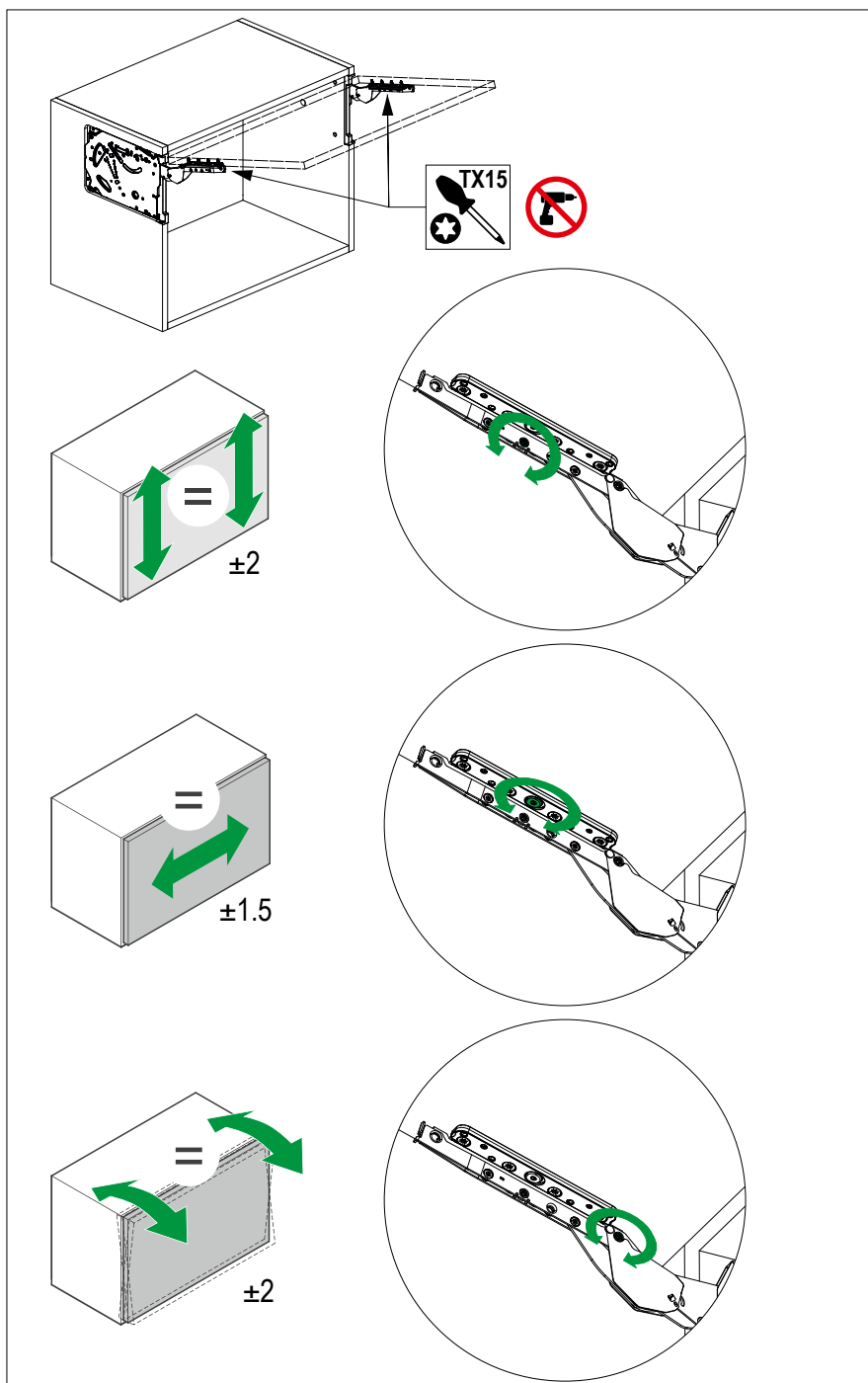
Lateral, height and depth adjustment



### 3 Adjustment

## 3.8 Flap doors with hidden fitting

### Lateral, height and inclination adjustment



### 3 Adjustment

#### 3.9 Pantry cabinet



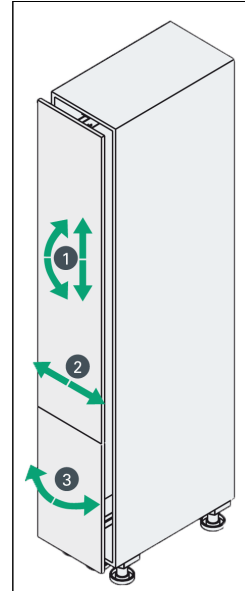
**Height adjustment**



**Lateral adjustment**

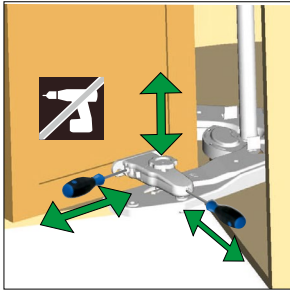


**Inclination adjustment**

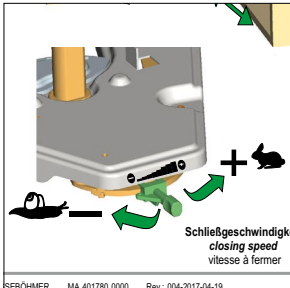


### 3 Adjustment

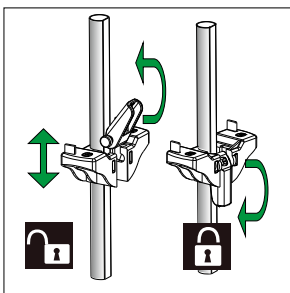
#### 3.10 Corner cabinets



Door adjustment



Closing speed adjustment



Adjustment of shelf



**SACHSENKÜCHEN**  
**H.-J. EBERT GMBH**  
OT Obercarsdorf  
Dresdner Straße 78  
01744 Dippoldiswalde  
Germany

Tel.: +49 35 04 64 81-0  
Fax: +49 35 04 64 81-35  
[info@sachsenkuechen.de](mailto:info@sachsenkuechen.de)  
[www.sachsenkuechen.de](http://www.sachsenkuechen.de)

Rev 2025-04-23